

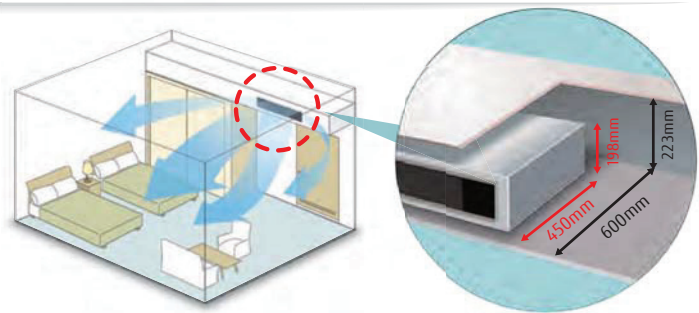
NEW Bulkhead Duct Built-in Drain Pump



Features

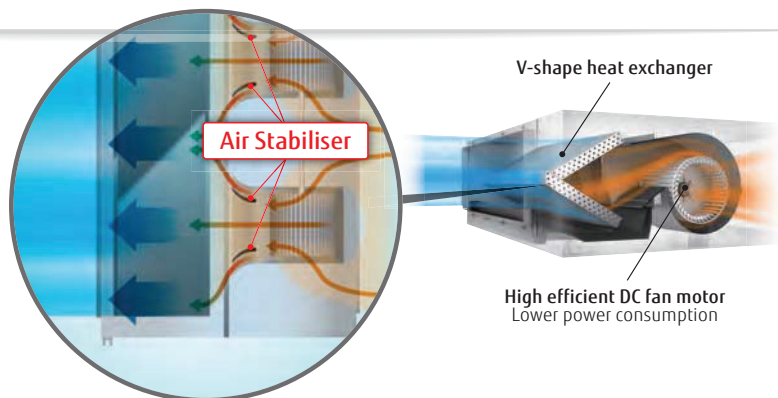
Large living space available

- Installation space can be reduced down to a minimum depth of 450 mm and height of 198 mm and providing a compact design
- Minimum size: Depth 450 mm, Height 198 mm Volume 30% down compared with current model
- Lightweight: 16 kg 10% down



Optimum airflow path and low noise operation

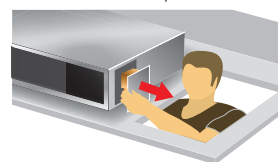
Low noise is realised drastically by stabilised airflow design



Easy design and maintenance for drain

By using the DC fan motor, it is possible to change the static pressure range from 0 to 50 Pa*. The change of static pressure range is possible by remote controller.
*: 0 to 30 Pa. (12)

Built-in drain pump as standard:
Maintenance is easy



Parts can be replaced from the side of the body where maintenance is easier

Auto Louvre Grille Kit (Option)

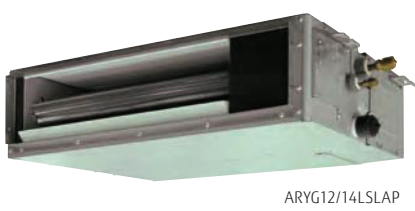
- Thin design provides a comfortable living environment over a wide area.
- Automatic louvre grille provides comfortable air conditioning all the way down to the floor and matches the interior design well. (Optional)



Easy Washable filter



Model : ARYG12LSLAP / ARYG14LSLAP / ARYG18LSLAP
(Horizontal only installation)



ARYG12/14LSLAP



ARYG18LSLAP



Wired R.C.



Specifications

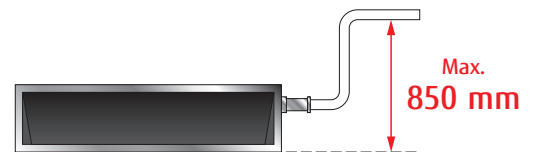
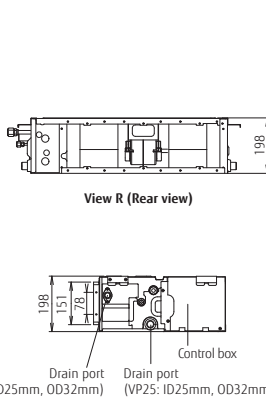
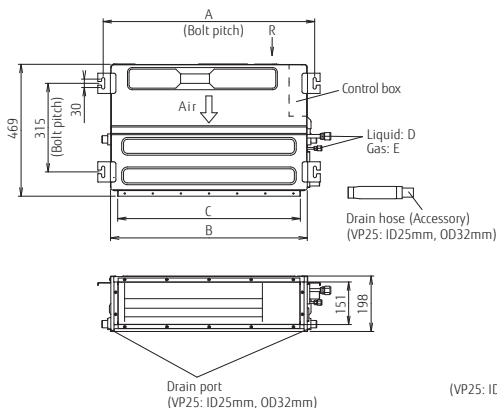
Model No.	Indoor unit		ARYG12LSLAP	ARYG14LSLAP	ARYG18LSLAP
	Outdoor unit		AOYG12LALL	AOYG14LALL	AOYG18LALL
Power Source	Single-phase, ~230V, 50Hz				
Capacity	Cooling	kW	3.50 (0.90-4.40)	4.30 (0.90-5.40)	5.20 (0.90-5.90)
	Heating		4.10 (0.90-5.70)	5.00 (0.90-6.50)	6.00 (0.90-7.50)
UK Total/Sensible Cooling		kW	3.36 / 2.56	4.11 / 3.15	4.98 / 3.79
Input Power	Cooling/Heating	kW	1.03/1.15	1.34/1.49	1.62/1.77
EER	Cooling	W/W	3.40	3.21	3.21
COP	Heating		3.56	3.35	3.38
Pdesign	Cooling/Heating(-10°C)	kW	3.5/4.2	4.3/4.5	5.2/5.2
SEER	Cooling	W/W	5.70	5.60	5.80
SCOP	Heating		3.90	3.80	3.80
Energy Efficiency Class	Cooling	A+			A+
	Heating	A			A
Annual Energy Consumption	Cooling	kWh/a	215	269	314
	Heating		1505	1656	1914
Moisture Removal		l/h	1.2	1.4	1.8
Sound Pressure Level	Indoor (Cooling)	H/M/L/Q	31/27/25/23	35/30/27/23	33/29/26/23
	Indoor (Heating)	H/M/L/Q	31/27/25/23	35/30/27/23	33/29/26/23
Sound Power Level	Outdoor(Cooling/Heating)	High	47/48	49/49	50/50
	Indoor(Cooling/Heating)	High	55/57	60/62	58/59
Sound Power Level	Outdoor(Cooling/Heating)	High	61/63	62/64	62/65
	Indoor / Outdoor	High	650/1780	800/1910	940/2000
Static pressure range (Standard)		Pa	0 - 30 (10)	0 - 50 (15)	0 - 50 (15)
Net Dimensions H x W x D	Indoor	mm	198×700×450	198×700×450	198×900×450
		kg	15.5	15.5	18.5
Weight	Outdoor	mm	578×790×300	578×790×300	578×790×300
		kg	40	40	40
Remote Controller Type (Supplied With Unit)			Wired	Wired	Wired
Interconnecting Cable (Suggested cable size 1.5mm)			3 Core + Earth		
Suggested MCB Size		Amp	16	16	16
Max. Operating Current	Cooling/Heating	Amp	7.5/10.0	9.0/12.5	9.0/12.5
Power Supply To			Outdoor		
Connection Pipe Diameter (Gas & Liquid)		Inch	1/4 & 3/8	1/4 & 1/2	1/4 & 1/2
Max Pipe Length (Factory Gas Charge Length)		m	25 (15)	25 (15)	25 (15)
Max Height Difference			15	15	15
Refrigerant	Type		R410A	R410A	R410A
	Charge	g	1150	1250	1250
	Additional Charge	g/m	TBC	TBC	TBC
Operation Range	Cooling	°CDB	-10 to 46	-10 to 46	-10 to 46
	Heating		-15 to 24	-15 to 24	-15 to 24
System List Price		£	1281	1386	1581

Optional parts

- Wired Remote Controller: UTYRNRZY2 £161
 - Simple Remote Controller: UTYRSNYM £83
 - Simple Remote Controller: UTYRSRY £120
 - IR Receiver Kit: UTYLBTYM £266
 - Remote Sensor Unit: UTYXSZX £56
 - External connect Kit: UTYXWZXZG £8
 - Auto Louvre Grille Kit: UTDGXSAW (ARYG12/14LSLAP) £135
 - UTDGXSBW (ARYG18LSLAP) £151
- (Refer to page 102 for accessory combinations)

Dimensions

(Unit : mm)



Drain hose is a standard accessory

	ARYG12/14LSLAP	ARYG18LSLAP
A	752	952
B	700	900
C	650	850
D	6.35	9.52
E	12.7	15.88